

# Technodrain<sup>®</sup>

*Technologies for linear drainage*



Technodrain combines the experience of Asoplast in the domain of linear drainage for the building and industrial sector. All solutions are designed to provide the end user with an innovative and easy-to-install product.

The HDPE material from which our channels are manufactured makes Technodrain resistant, immune to environmental and chemical attack as well as guarantees a solid and unalterable structure.

Its low-weight design allows for easy and cost-effective installation without the use of extra handling equipment.

A wide range of accessories and gratings are available for all load classes, from A15 to F900 (EN1433).

Asoplast is an ISO 9001 certified company and all products comply with the European standard EN1433 for CE marking.

neo neomax evo evomax exel pro promax magnum

DRAIN slot steel MAX

Wave 110

Well drain



MADE IN ITALY



A15

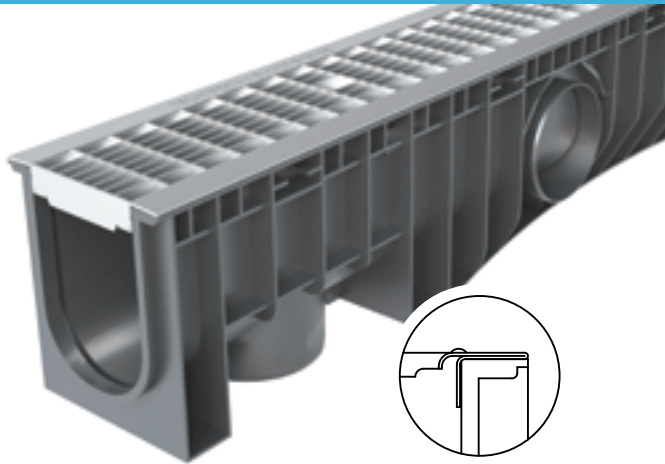


B125

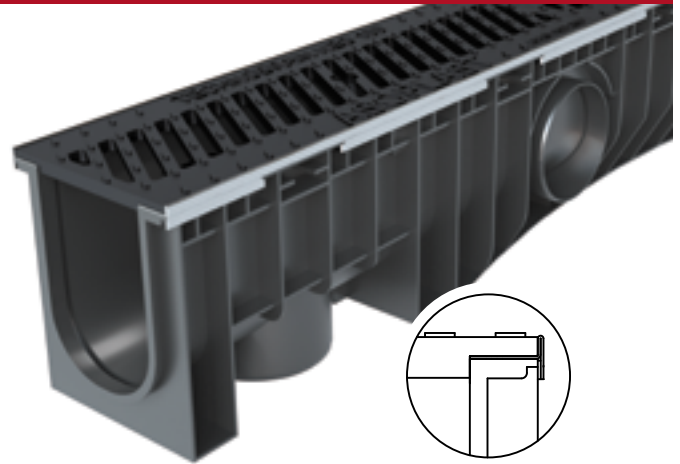


C250

## Channels with flat edges A15 ÷ C250



## Channels with low profile galvanized edges B125 ÷ C250



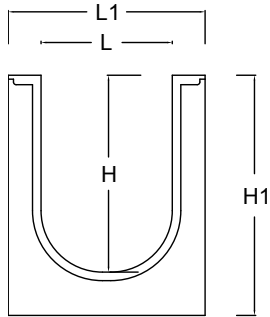
Technodrain Neo system is composed of:

- HDPE channel body with flat edges.
- Grating that cover the entire channel area.
- For use in pedestrian areas, parks and gardens, cycle paths and residential parking areas.
- Ideal for urban decoration and architectural solutions.

Technodrain Neomax system is composed of:

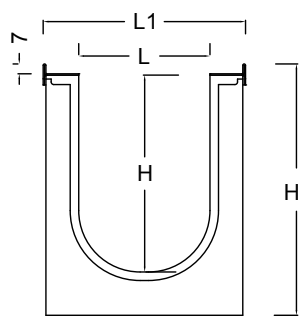
- Channel body in HD-PE with a galvanized steel edges, 2 mm thickness.
- Height of edges 7 mm
- Ductile iron gratings loading class B125/C250
- Ideal for multi-story parking lots and residential garages

Size for channels NEO (mm) - Length 1.000 mm



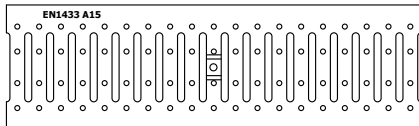
NEO	H	H1	L	L1
100S	75	108	100	150
100H	150	183	100	150
150S	75	108	150	200
150H	150	183	150	200
200S	75	108	200	250
200H	150	183	200	250
200HV	250	283	200	250

Size for channels NEOMAX (mm) - Length 1.000 mm

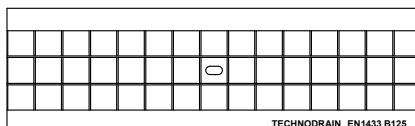
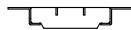


NEOMAX	H	H1	L	L1
100S	75	116	100	154
100H	150	191	100	154
150S	75	116	150	204
150H	150	191	150	204
200S	75	116	200	254
200H	150	191	200	254
200HV	250	291	200	254

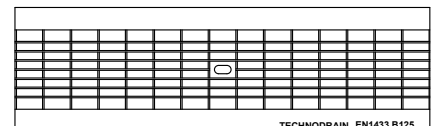
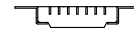
## Gratings for channels Neo/Neomax (Neomax only available with ductile iron gratings)



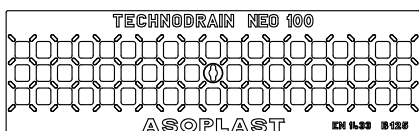
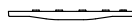
GALVANIZED GRATING A15



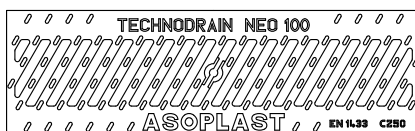
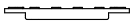
GALVANIZED GRATING MESH 30/30 B125



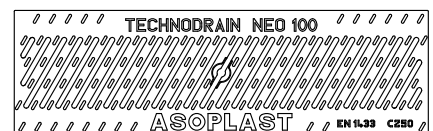
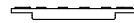
GALVANIZED GRATING MESH 30/10 B125



DUCTILE IRON MESH GRATING B125



DUCTILE IRON GRATING C250 10 mm



DUCTILE IRON GRATING C250 6 mm\*

\*Only available on channels 100H and 100S



A15

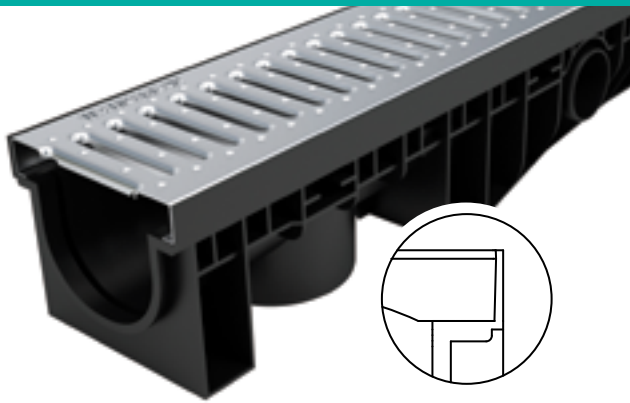


B125

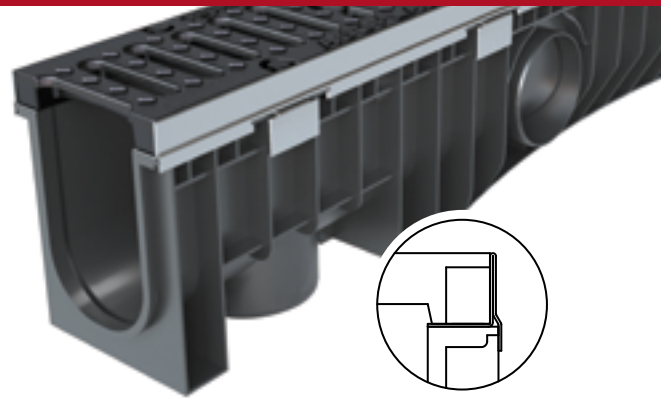


C250

## Channels with HDPE integrated edges A15 ÷ C250



## Channels with galvanized edges A15 ÷ C250

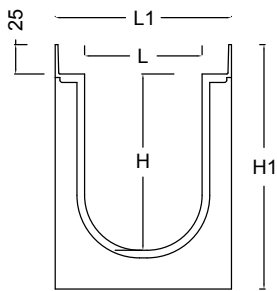


**Technodrain Evo** is composed of:

- HDPE channel body with integrated edges, 3 mm thickness
- Edges depth 25 mm.
- Available in a wide range of gratings up to C250.
- Ideal for DIY, parking lots, sports installations.

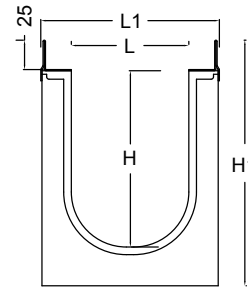
**Technodrain Evomax** is composed of:

- HDPE channels body with galvanized edges 2 mm thickness
- Edges depth 25 mm.
- Available in a wide range of gratings up to C250.
- Ideal for parking lots, commercial areas, roadside drainage



Size for channels EVO (mm) - Lenght 1.000 mm

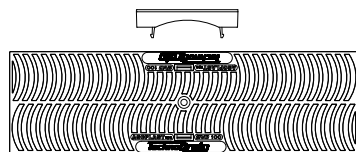
EVO	H	H1	L	L1
100S	75	133	100	150
100H	150	208	100	150
150S	75	133	150	200
150H	150	208	150	200
200S	75	133	200	250
200H	150	208	200	250
200HV	250	308	200	250



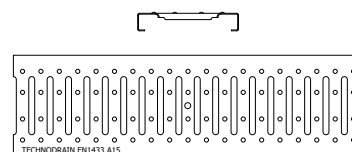
Size for channels EVOMAX (mm) - Lenght 1.000 mm

EVOMAX	H	H1	L	L1
100S	75	134	100	152
100H	150	209	100	152
150S	75	134	150	202
150H	150	209	150	202
200S	75	134	200	252
200H	150	209	200	252
200HV	250	309	200	252

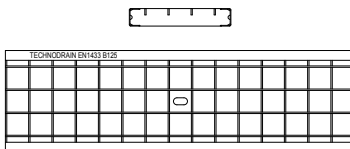
## Gratings for channels Evo/Evomax



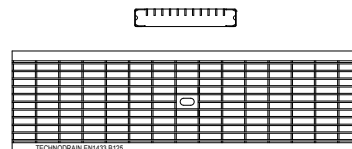
HDPE GRATING WAVE STYLE



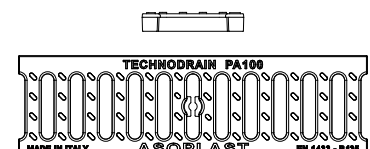
GALVANIZED GRATING A15



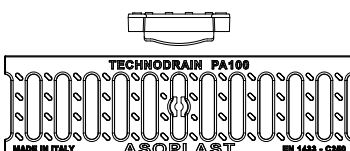
GALVANIZED GRATING MESH 30/30 B125



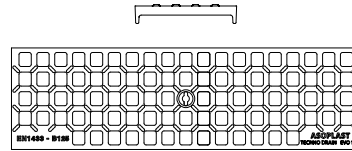
GALVANIZED GRATING MESH 30/10 B125



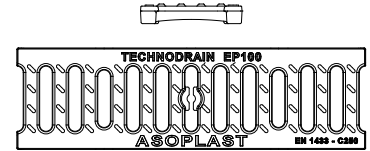
POLYAMIDE GRATING B125 18 mm\*



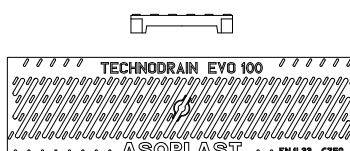
POLYAMIDE GRATING C250 18 mm\*



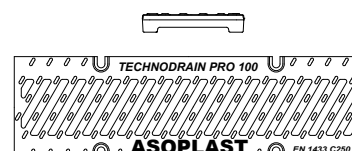
DUCTILE IRON MESH GRATING B125



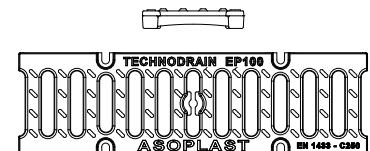
DUCTILE IRON GRATING C250 18 mm



DUCTILE IRON GRATING C250 6 mm\*



DUCTILE IRON GRATING C250 10 mm  
8 BOLTS FIXING



DUCTILE IRON GRATING C250 18 mm  
8 BOLTS FIXING

\*Only available on channels 100H and 100S

# exel



C250



D400



E600



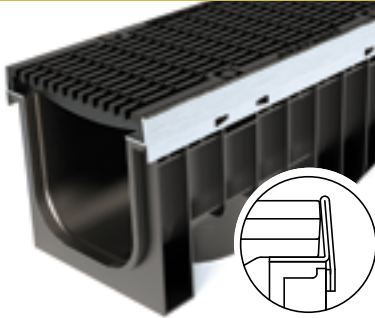
F900

EN1433  
loading class

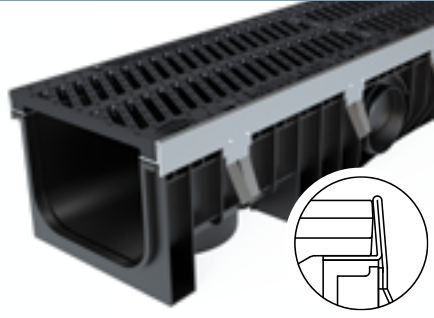
# pro

# promax

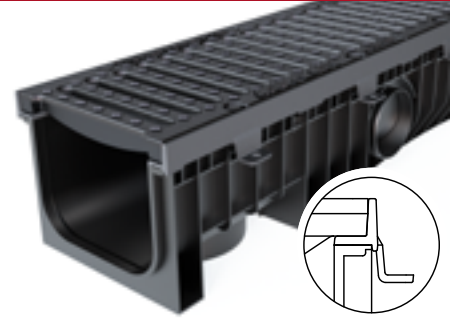
Channels with galvanized edges  
C250 ÷ F900



Channels with galvanized reinforced edges  
C250 ÷ F900



Channels with ductile iron edges  
C250 ÷ F900



**Technodrain Exel** is composed of:

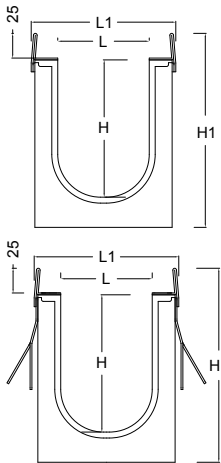
- HDPE body with galvanized protection edges 4 mm thickness.
- Edges depth 25 mm.
- Suitable for use up to load class F900.
- Ideal for heavy traffic parking lots and road drainage.

**Technodrain Pro** is composed of:

- HDPE channel body, with galvanized protection edges, 4 mm thickness.
- Edges depth 25 mm, equipped with external anchors for a better connection to concrete.
- Suitable for use up to load class F900.
- Ideal for heavy traffic parking lots, road drainage.

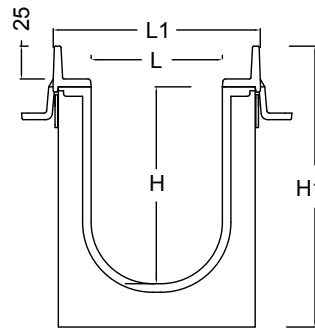
**Technodrain Promax** is composed of:

- HDPE channel body, with ductile iron protection edges, 7 mm thickness.
- Edges depth 25 mm, equipped with external anchors for a better connection to concrete.
- Provided with gratings up to class F900.
- Perfect for highway drainage, petrol stations, industrial yards, ports and airports.



Size for channels EXEL and PRO (mm) - Length 1.000 mm

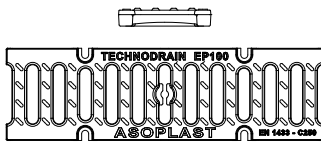
EXEL/PRO	H	H1	L	L1
100S	75	135	100	158
100H	150	210	100	158
150S	75	135	150	208
150H	150	210	150	208
200S	75	135	200	258
200H	150	210	200	258
200HV	250	310	200	258



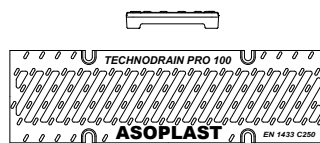
Size for channels PROMAX (mm) - Length 1.000 mm

PROMAX	H	H1	L	L1
100S	75	139	100	158
100H	150	214	100	158
150S	75	139	150	208
150H	150	214	150	208
200S	75	139	200	258
200H	150	214	200	258
200HV	250	314	200	258

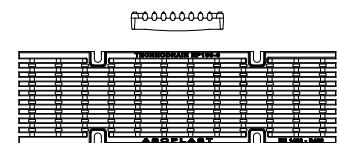
## Gratings for channels Exel/Pro/Promax



DUCTILE IRON GRATING C250 18 mm



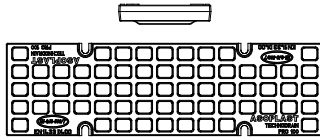
DUCTILE IRON GRATING C250 10 mm



DUCTILE IRON GRATING D400 6 mm



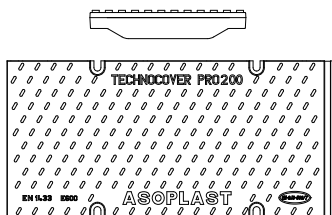
DUCTILE IRON GRATING D400 18 mm



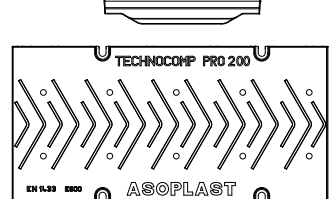
DUCTILE IRON MESH GRATING D400



DUCTILE IRON GRATING F900 18 mm



DUCTILE IRON SOLID TOP COVER E600



DUCTILE IRON COVER E600 FOR COMPOSTING SYSTEM



C250

# magnum 300



C250



D400

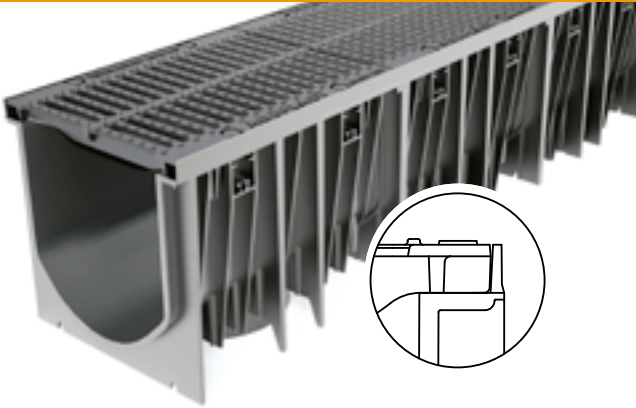


E600

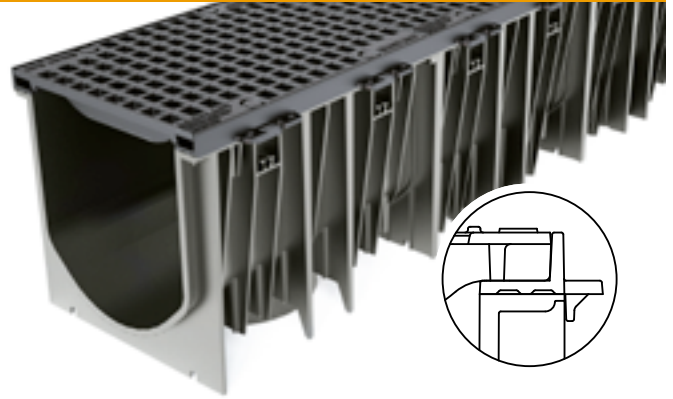


F900

## Channel with HDPE integrated edges C250



## Channel with ductile iron edges C250 ÷ F900



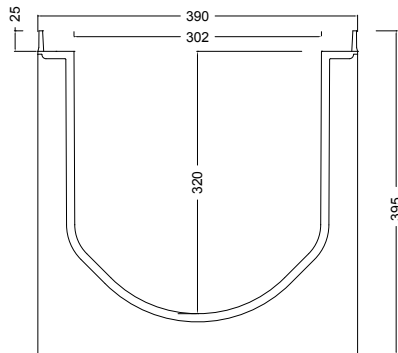
**Technodrain Magnum City** is composed of:

- HDPE channel body with integrated edges.
- Edges depth 25 mm.
- Suitable for use in areas requiring high drainage capacity within the range of load class C250.

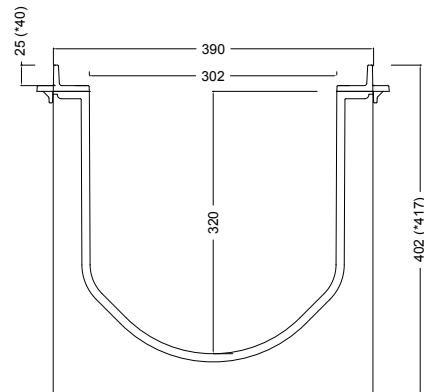
**Technodrain Magnum Traffic** is composed of:

- HDPE channel body, with ductile iron protection edges, 7 mm thickness
- Edges depth 25 mm, equipped with external anchors for a better connection to concrete.
- Provided with gratings up to class F900
- Perfect for highway drainage, petrol industrial yards, ports and airports.

## CHANNELS - Length 500 mm



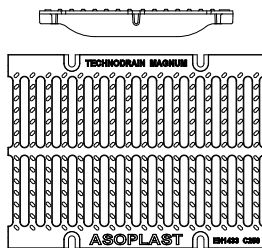
**MAGNUM CITY**  
300/320



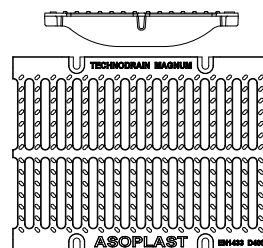
**MAGNUM TRAFFIC**  
300/320

\*for gratings E600 and F900

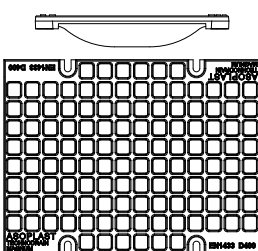
## Gratings for channels Magnum 300



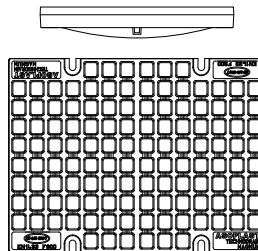
DUCTILE IRON GRATING C250 16 mm



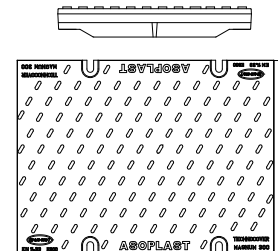
DUCTILE IRON GRATING D400 16 mm



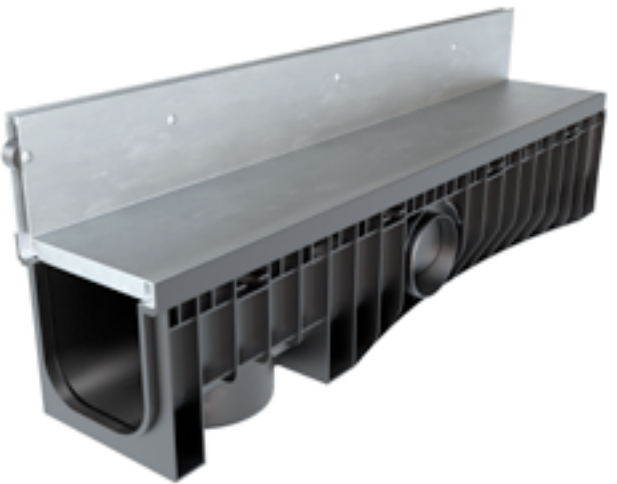
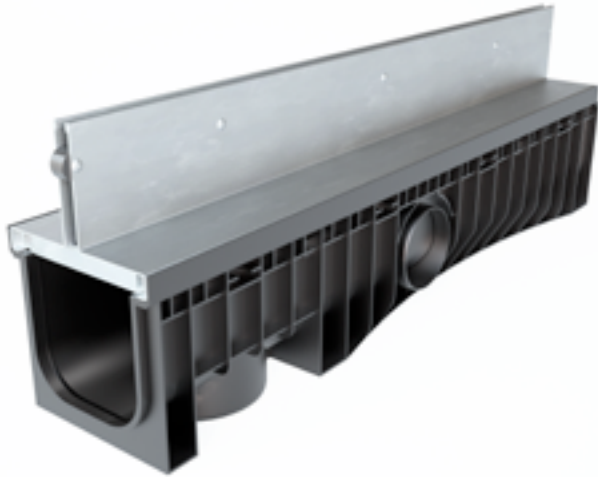
DUCTILE IRON MESH GRATING D400



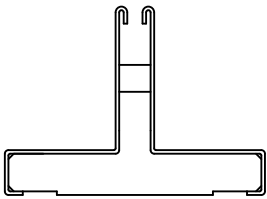
DUCTILE IRON MESH GRATING F900



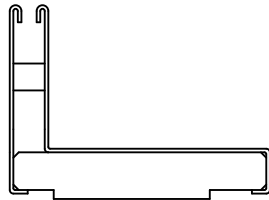
DUCTILE IRON SOLID TOP COVER E600



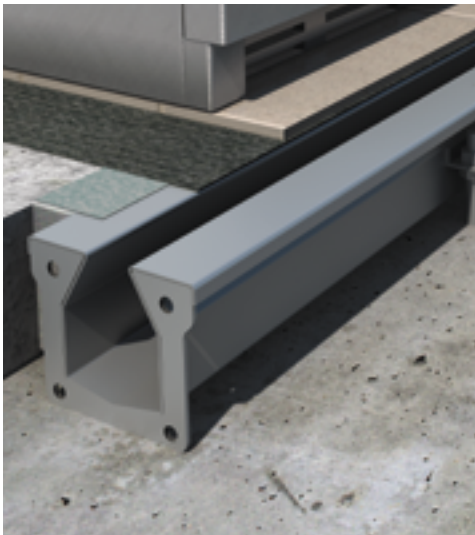
All channels of the Evo/Exel/Magnum series can be equipped with galvanized or stainless steel 304/316 slot gratings.  
The gratings can be with symmetrical or asymmetrical slot, single or double slot.  
Slot depths can be supplied at the user's request.  
Inspection elements are also available on request to match the gratings.  
For enquiries and technical specifications please contact our sales department.



Symmetric Slot



Asymmetric Slot

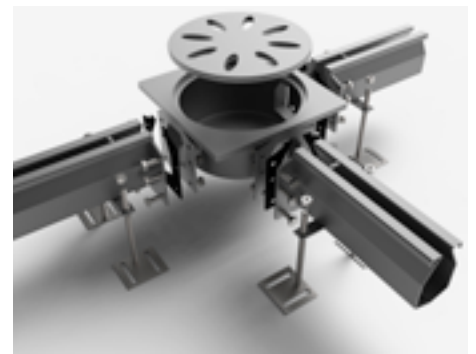
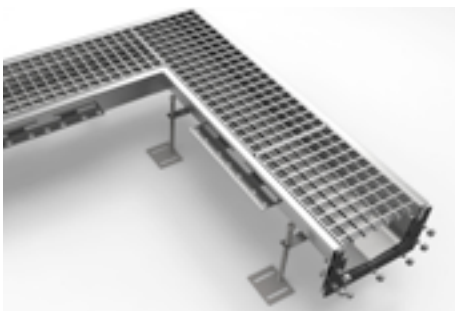


## *steel* MAX

Technodrain Steelmax is the drainage system made entirely of AISI 304 or 316 stainless steel, complete with accessories such as siphons and collecting filters.  
Can be manufactured to customer specifications in a variety of sizes and designs as a linear or internal gradient system.  
Ideal for use in the food industry such as:

- dairies, slaughterhouses, processing and canning industries, restaurants and kitchens, cellars.

Essential sectors: medical, chemical, pharmaceutical sectors.  
For enquiries and technical specifications please contact our sales department.





A15



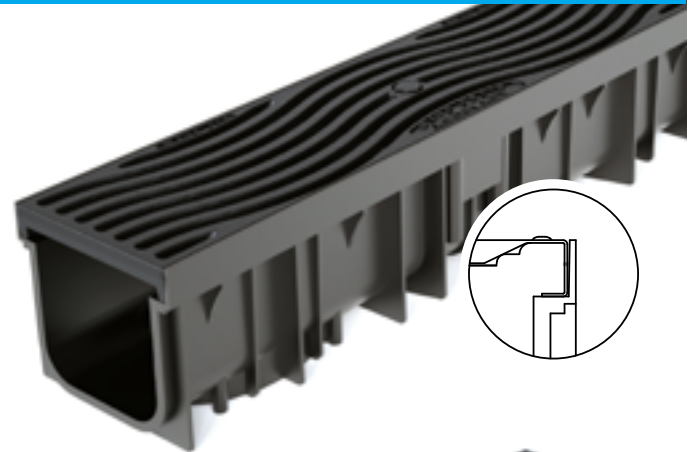
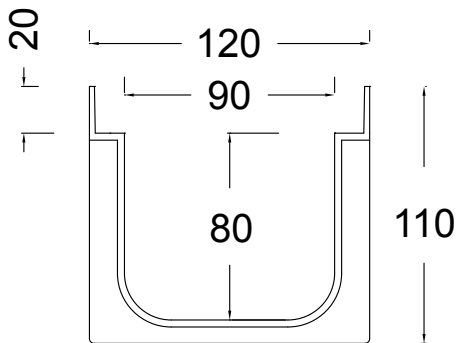
B125

## Domestic channels with HDPE integrated edges A15 ÷ B125

Wavedrain H110 is composed of:

- PE-PP channel body with integrated protection edges high 20 mm.
- Wide range of gratings from A15 to B125.
- HDPE fixing bars for gratings.
- Perfect for residential construction, gardens and sports installations.

### CHANNEL WAVEDRAIN H110 - Length 1.000 mm

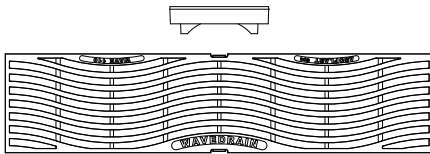


#### 4WAY ADAPTOR

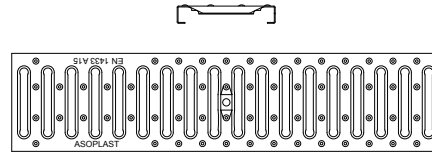
- With the 4WAY adaptor is possible:
- Realize a side outlet
  - Realize L, T, and Cross connections.



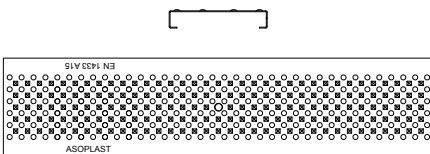
### Gratings for channel Wave 110



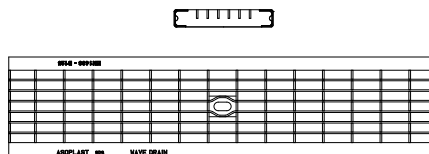
HDPE GRATING WAVE STYLE



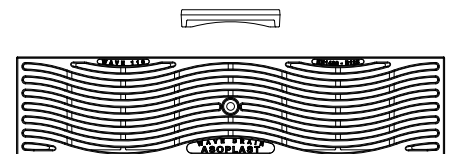
GALVANIZED GRATING A15



PERFORATED GALVANIZED GRATING A15



GALVANIZED GRATING MESH 30/10 B125



DUCTILE IRON GRATING WAVE STYLE B125

# Well drain

Well drain is a complete system of manholes, covers and gratings, frames and siphons made of PVC and Polypropylene.

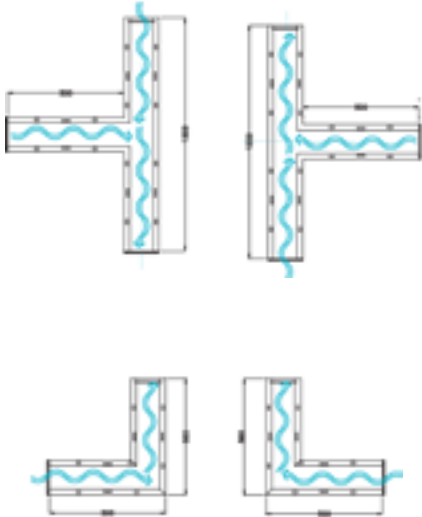
Manufactured in the sizes (mm):  
200x200 / 300x300 / 400x400 / 550x550



## ACCESSORIES

Technodrain channels are equipped with a wide range of accessories such as sump units with integrated siphon, debris baskets, end caps, special pieces for corners and tees.

CORNERS AND TEES



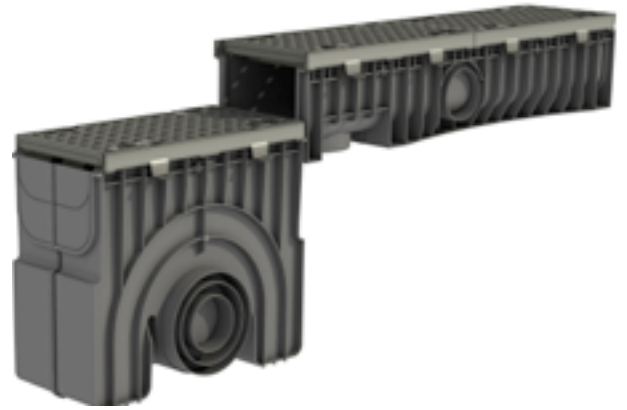
END CAPS



INSPECTIONABLE SIPHON



SUMP UNITS INTEGRATED WITH CHANNELS



Asoplast Spa has been active in the manufacturing of extruded and injection moulded plastic products for the construction market since 1978.

The company is a global leader in the production of linear HDPE drainage channels and products for sewage, water management and industrial applications. Asoplast Spa has 2 production sites in central Italy with a total area of 75,000 square metres of which 20,500 are covered, and has a work force of 120 employees.

Asoplast Spa represents a state-of-the-art facility for the production of plastic products and is situated in the Marche region of Italy, which traditionally boasts a strong industrial vocation for excellence in this field.



*Main office*

Via San Filippo Neri, 13  
63851 Ortezzano (FM) - Italy

Tel. +39 0734 7785 - Fax +39 0734 778540

export@asoplast.com - info@asoplast.com

www.technodrain.com - www.asoplast.com

Technodrain  
installation instructions

